



# NORTHWOOD NEWS

PUBLISHED BIMONTHLY BY THE NORTHWOOD-FOUR CORNERS CIVIC ASSOCIATION ■ JUNE 2003

## Sidewalk Installation Imminent

By Ken Hawkins

By the time you read this, residents along three Northwood-Four Corners streets will have received letters from Montgomery County notifying them that their long-awaited sidewalks are about to be built. Richard Earp, manager of the Department of Public Works and Transportation's sidewalk program, wrote to adjacent property owners on Lorain Avenue (between Timberwood and Sutherland), Sutherland Avenue (between Lorain and Southwood), and

Eastwood Avenue (between Southwood and Lockridge) about the project.

While the wet spring delayed this and most other sidewalk projects in the county, construction is now scheduled to begin in late June or early July. A DPWT inspector will be assigned to the project and be available to answer any questions property owners have about the sidewalks, alignments, removal of plants, etc.

The NFCCA passed motions requesting these sidewalks in 1998 and 2000. Our thanks go to all who supported the resolutions and to the property owners who are doing their part to make our streets safer to walk along. If you have any questions about the project, call the sidewalks program at 240.777.7270. ■

## Next Meeting on June 11th

The next meeting of the Northwood-Four Corners Civic Association will be held on Wednesday, 11 June 2003, at 7:30 p.m. at the North Four Corners Rec Center. The Rec Center is located at the end of Southwood Road, just off Edgewood Drive.

All residents of the Northwood-Four Corners area are invited—nay, encouraged!—to attend and express their views. Please note that only paid members of the NFCCA are eligible to vote, but all may speak. (Annual dues are \$5 per person and may be paid at the meeting.)

There will not be another meeting of the Northwood-Four Corners Civic Association until October. (There is no meeting in August.) Enjoy your summer! ■

## INSIDE

### Homes Sweet Homes.....2

The interesting history of Maryland's only member-run cooperative housing project (right here in our neighborhood!).

### A Rose is a Rose is a Weed?.....3

Carole Barth exposes the multiflora rose for the creeping invasive it is.

### Concern About Planning Meeting for North Four Corners Park.....4

The Board expresses its objections to the MNCPPC.

### Membership Update .....8

Edgewood Avenue now has the most households that have joined the NFCCA.

This issue printed  
courtesy of  
Sir Speedy  
in Rockville,  
301.340.0500.

## Attention, If You Live on Eisner!

Residents along the NFCCA's northern border, the southern side of Eisner Street, no longer have someone to deliver this newsletter to them. An individual is needed to deliver the *Northwood News* five times a year (October, December, February, April, and June, usually around the first

of the month) to the 17 even-numbered houses on Eisner, between University Blvd. and Cavalier.

*If no volunteer steps forward, delivery will be suspended to homes on Eisner Street.* If you would like to volunteer, please call Ken Hawkins, 301.681.0762. ■

## PRESIDENT'S MESSAGE

Spring has sprung and the annual Lockridge Drive creek cleanup was its usual rousing success. The turnout seems to get bigger each year. Special thanks should be given to Carole Barth and Jim Zepp who organized the affair and provided the logistical support. Special thanks should also be given to those who provided the clipping, cutting, and removal services which eliminated the vines and other invasive species along the creek bed.

I found that the most encouraging aspect of this year's clean up was the large number of children who participated. While a formal count was not conducted, veteran creek cleaners noted that there were probably more children than adults. Each year, an increasing number of kids participate. This is most encouraging for two reasons.

First, from an operational perspective, the youngsters, teenagers, and those in-between have unbounded energy, can go places their elders cannot reach, and do not mind in the least getting wet. This makes the adults' job much easier. Second, it warms the heart to see young women and men with an appreciation for nature and the willingness to improve the environment. Their assistance is to be commended. Their spontaneity is to be admired.

There are essentially two things that we can do in order to foster a healthy environment for the younger generation. First, we can leave them an environment which is better than we found it and as unspoiled as we can make it. Second, we can teach them to do likewise for the next generation. From the turnout at the creek clean up, I can conclude that we are successful at both. We, as a neighborhood, should pat ourselves on the back.

—Vince Jankoski

## Know About Our Area?

The history of our area has not been well-preserved. The celebration of the 50th anniversary of the building of the cooperative homes on Cavalier and Belton (see story, below) is nudging us to see what others remember about our community.

If you are a long-time resident, we'd like to publish your reminiscences of what it was like here when you first moved in. If you know of someone who lived here long ago, please contact them. Give your stories to Jacquie Bokow, 301.593.8566 or [jbokow@earthlink.net](mailto:jbokow@earthlink.net). ■

## NORTHWOOD NEWS

*Northwood News* is published by the Northwood-Four Corners Civic Association. The NFCCA represents the 950 households in the area bounded by Colesville Road (Route 29), University Blvd. (Route 193), Eisner Street, and the Northwest Branch.

Any resident of this area is eligible to join the NFCCA. Annual dues are \$5 per person and may be paid at any Association meeting or mailed to the treasurer.

*Northwood News* is published five times a year—in October, December, February, April, and June. To place an ad or discuss a story, please contact the editor.

### Editor

Jacquie Bokow  
10603 Cavalier Drive  
Silver Spring, MD 20901  
301.593.8566  
[nfcca@verizon.net](mailto:nfcca@verizon.net)

## Homes Sweet Homes Revisited

By Robin Loube

Perhaps you have noticed the 44 brick ranch-style homes on Cavalier Drive and on Belton. These homes have a unique and interesting history: they were built nearly 50 years ago by Maryland's only member-run cooperative housing project. Thirteen of the founding members, including initiators Leo and Alma Gershenson and Esther Lahne, still live in the neighborhood.

In May of 1985, a local

newspaper, *The Chronicle*, published an article about the cooperative and its history. Headlined "Homes Sweet Homes," the article by Lola Demma described the birth of the project and the challenges the leaders and members faced in bringing the idea to fruition. The following paragraphs excerpted from Demma's article highlight aspects of that story:

"In March of 1951, four women (D.C. apartment  
*(continued on page 6)*

# A Rose is a Rose is a Weed?

By Carole Barth

When the rose in question is the multiflora rose, it is definitely an invasive exotic weed. Multiflora rose is a thorny shrub with arching branches. It blooms in May with tapering clusters of white flowers each about an inch across. It is native to Japan, Korea, and Eastern China. In 1866 it was introduced to America as rootstock for ornamental roses. In the '30s, the U.S. Soil Conservation Service promoted it for use in erosion control and as living fences for livestock. State conservation agencies encouraged people to plant it for wildlife habitat, and transportation agencies planted it as crash barriers and to reduce headlight glare.

Able to live in a wide range of habitats, early to leaf out and late to lose its leaves, prey to very few natural enemies, and possessing incredible reproductive abilities, the multiflora rose took off like wildfire from these introductions. Today multiflora rose is found throughout the country except in standing water, deserts, and where winter temperatures exceed -28°F. It invades pastures and disrupts cattle grazing. It easily invades open woodlands, forest edges, old fields, and anywhere subject to disturbance.

Uncontrolled, it forms impenetrable thickets which can choke out virtually all native plants. A single shrub can grow to 15 feet high and can have a root crown with an eight-inch diameter. Studies suggest it is highly competitive for soil nutrients. It

spreads by seeds, rooting at the tip of the canes, and plants arise from shallow roots. A single plant may produce a million seeds per year, and seeds can remain viable in the soil for 10-20 years. Passing through the digestive tract of birds enhances seed germination.

To control it, light infestations can be dug out or pulled as long as you have a strong back and very heavy gloves. Research has also documented that mowing or cutting it down three to six times within the growing season for two to four years can control its spread. However, the thorns are so sharp they can easily puncture mower tires, so if you plan to mow a lot of multiflora rose, experts recommend filling the tires with foam. Freshly cut stumps can also be painted with the herbicide glyphosate late in the growing season.

A few years ago, Charles Pritchard went after the multiflora growing between Lockridge Trail and the Creek. For the first time, it was possible to see the creek from that portion of the trail. However, it is beginning to creep back, and there are other areas of the park where it has completely taken over. If you would like to join the team of Weed Warrior volunteers working in Northwest Branch Park, call Carole Bergmann, Montgomery County Forest Ecologist, at 301.949.2818. If you think you might have multiflora rose in your yard but need some help identifying it, call Carole Barth at 301.593.7863. ■

## NFCCA BOARD

The Board of Directors for the Northwood-Four Corners Civic Association meets five times a year, in October, December, February, April, and June. All Board meetings are open to the public.

### President

Vincent A. Jankoski  
10801 Lockridge Drive  
301.681.3692  
vjankoski@wmata.com

### Vice President

Charles Pritchard  
10612 Margate Road  
301.593.1781  
erc69434@aol.com

### Treasurer

Margaret Hawkins  
10205 Lorain Avenue  
301.681.0762  
margaret.hawkins@nara.gov

### Secretary

Mike Diegel  
10304 Eastwood Avenue  
301.681.7346  
DiegelME@aol.com

### At Large

Alan Friedman  
126 Snowy Owl Drive  
301.681.9156  
afriedman@ftc.gov

Ken Hawkins  
10205 Lorain Avenue  
301.681.0762  
kenneth.hawkins@nara.gov

Heather & Matt Maurano  
10208 Lorain Avenue  
301.593.5809  
hmaurano@aol.com  
mmaurano@aol.com

Jim Zepp  
10602 Lockridge Drive  
301.593.7863  
jzepp@mindspring.com

# NFCCA Board Expresses Its Concerns About Planning Meeting for North Four Corners Park

By Jim Zepp

The Maryland-National Capital Park and Planning Commission (MNCPPC) staff has scheduled a public meeting to discuss the alternative facility plans that have been developed for the expansion of the North Four Corners Park. This will be held on Thursday, June 19, at 7:00 p.m., at the Parks Department Headquarters, 9500 Brunett Ave., Silver Spring.

The MNCPPC staff and consultant are planning to present two alternatives for the first time to the community at this meeting. The NFCCA Board is concerned because the intention is to

divide the attendees into two groups immediately following the presentations for discussion of the alternatives. Thus, residents will have had no time to consider the various aspects of the two alternatives and how they may affect the problems and desired recreational uses identified by the community.

Given that the MNCPPC staff and consultant have taken six months to respond to the citizens' comments about this park, it seems only reasonable that the community be allowed adequate time to study the options and the various tradeoffs involved before giving what may be

construed as its final input to the planning process. The NFCCA board is sending a letter to MNCPPC expressing its objections to handling the citizens' comments in this manner.

## Crowding, Overuse Are Issues

During the Parks Department's first facilities planning meeting for the North Four Corners Park expansion last January, and at the NFCCA's April meeting, many residents expressed their concerns about the problems with the existing park facilities. This includes user parking that spills over

*(continued on page 5)*

## PARKLAND POOL & PLAYGROUND



### A Friendly Community Atmosphere

Shaded Pool • Picnic Area • Fenced Baby Pool

Sanded Multi-Age Play Area

Volleyball • Ping Pong • Basketball

Swim Team • Holiday Party & More

**1124 Arcola Ave.**

Next to Kemp Mill Shopping Center

**301-649-5670**

[www.parklandpool.org](http://www.parklandpool.org)

**50% OFF**  
**1st Year Dues**

With purchase of  
new membership  
And this coupon  
Expires 7/1/03

**FREE**  
**Family or Individual**  
**SWIM PASS**

With This Coupon  
One Pass Per Family Per Season  
Immediate Family Members Only  
Expires 7/1/03

NAME \_\_\_\_\_

ADDRESS \_\_\_\_\_  
\_\_\_\_\_

PHONE \_\_\_\_\_

## Concern About NFC Park

(continued from page 4)  
to the surrounding residential streets, piles of trash that frequently overflow the cans, and human defecation in the bushes by ballfield users. Although some congestion and trash can be expected with any public facility, these adverse impacts are magnified by the constant and intensive use of the existing park facilities.

With this in mind, it was surprising to go to the MNCPPC Web site and find that the rec center building in the North Four Corners Park has one of the highest capacity limits among the 31 such facilities available in Montgomery County. Groups of up to 150 persons can rent

the building for events. With the small number of parking spaces in the Park, it is inevitable that there will be spillover parking in the neighborhood, especially when other groups are using the ballfields at the same time. This also contributes to large amounts of trash being generated.

As additional facilities are planned for the site, reasonable capacity limits should be considered so that the public park doesn't become a public nuisance. The NFCCA board is exploring the potential for lowering the capacity limit of the rec center and requiring permits for use of the ballfields as solutions for these problems. ■

## Creek Cleanup

By Carole Barth

Thanks to everyone who came out to help with the annual Earth Day creek cleanup. We pulled about 30 bags of trash from the creek, along with a number of larger objects. Among the interesting items found were a tachometer, a manhole puller, and the remains of a bike. Mouthwash bottles continue to be one of the most frequently found articles. Evidently, underage drinking continues to be a significant problem in our community. Along with the trash collection, volunteers also removed invasive vines that threaten the trees. If you missed the Earth Day cleanup, don't worry; you'll get another chance this fall. ■

**WSSC 1292**  
**Licensed & Bonded**  
**Insured**

**Rockville PLL #1301**  
**Maryland State #3195**

### **W.H. Lewis & Company**

**Plumbing & Hot Water Heat**

**(301) 545-1170**

*Family Owned and Operated*  
*Northwood Resident for 20 Years*

**Small Repairs**  
**Remodeling**

**Hot Water Heaters**

**Small Drain Cleaning**  
**General Plumbing**

**All work done by Master Plumbers and Gas Fitters**

**We accept VISA and MasterCard**

**We are ✓ rated for Quality and Price in *Washington Consumer Checkbook***

## Homes Sweet Homes Revisited

*(continued from page 2)*  
dwellers) ... were pushing their children around, then they got to talking that some day they would like to own their own homes,' says Gershenson. One of the women ... learned of a new federal program designed to encourage cooperative home building....

"The five original families formed an organization, with nine members contributing \$1 each. Four of the nine members dropped out the following day, Gershenson recalls....

"The first thing they did was set out to buy a piece of land that they thought could accommodate about 25 homes. They eventually

settled on a 10-1/2 -acre site 'way out' in Four Corners, the last remaining piece of Maggie Reed's farm (which they bought) for \$20,000....

"Meetings were held and committees appointed to tackle financing, house plans, and subdivision drawings.... The women started looking in the newspapers to get an idea of the kind of house they wanted.... Next, surveyors and architects were hired. It was a pay-as-you-go deal. Each time a bill came up, it was divided among the members....

"They initially envisioned 26 homes with 12,000- to 15,000-square-foot lots. But the FHA told them that was not economically feasible,

and plans were made for 44 homes with an average lot size of about 8,500 square feet....

"To get the other 24 co-op members needed to go forward with the development, they managed to get a story published in *The Washington Post* about their unusual housing project.... Soon after that, the Northwood Park Association had its 44 members....

"At this point the association faced its most difficult problem: it could not get mortgage financing. Bank after bank turned down their application for a \$600,000 loan....

"For nearly a year the group looked for financing. At stake was the life savings

*(continued on page 11)*

## It's Time to Clean Your House!



*Stop worrying about finding the time to clean. I do the job right!*

Flexible Times ♦ References Available

Vast Experience ♦ Free Estimate

Reliable ♦ Licensed & Insured

Top Quality Service Since 1983

*Now you have someone to clean for you!*

**Ana's Housekeeping Service**

**Ana Gomez, 301.563.3393**



# John Burgess Real Estate Group

The Home Buying and Home Selling Team



www.johnburgessrealtor.com • 301-681-5093 • info@johnburgessrealtor.com

## YOUR NEIGHBORHOOD REAL ESTATE TEAM!



John Burgess • Sandy Schulz • Cheronn Collins  
Cara Lowry • Maya Clyatt • Chad Loube • Herb Krusen

RE/MAX Hall of Fame \*\* RE/MAX Platinum Club \*\* GCAAR Platinum Club



### Thinking of Making a Move?

*Call Our Team Today at 301-681-5093*

*for a **FREE** over-the-phone Market Analysis  
of your property!*

Visit our Website...

*At [www.johnburgessrealtor.com](http://www.johnburgessrealtor.com)*

*to find out about our preferred buyer's and seller's  
programs and for **FREE** information on the  
Real Estate Process*

***P.S. Search for new listings –  
Direct Link to MRIS!***



**RE/MAX** Pros Inc.  
3750 University Blvd. W.  
Kensington, MD 20895

Each Office Independently Owned and Operated



# Membership Update

By Margaret Hawkins

Throughout the year, the NFCCA has been seeking to reach a membership goal of 10 percent of all households in our area becoming dues paying members. In the last newsletter, we provided our progress to date on this membership drive, along with a list of the number of households participating on each street.

Since the last newsletter, many households have joined the NFCCA, increasing our level of membership to 79 households, which is eight percent of those eligible. Some streets have increased their membership, with Edgewood Avenue now having the most households with a total of nine.

Many thanks to those who sent in their dues, as well as a special thanks to those who provided extra donations.

Dues are used to help finance the newsletter, special flyers, Allied Civic Association dues, rental of the community center for meetings, and to match county grant dollars for such projects as the neighborhood sign.

Dues can be paid by cash or check (made out to the "NFCCA") and given to Margaret Hawkins, Treasurer, NFCCA, 10205 Lorain Ave., Silver Spring, MD 20901. Dues are \$5 per adult member of the household. Deposits are made approximately once every three weeks.

LAST QUARTER	THIS QUARTER
Total Households: 62	Total Households: 79
% of Neighborhood: 6.5%	% of Neighborhood: 8%
Mbrshp. Dues Total: \$565	Mbrshp. Dues Total: \$775
<b>9 Households:</b> None	<b>9 Households:</b> <i>Edgewood Ave. (+4)</i>
<b>6-7 Households:</b> None	<b>6-7 Households:</b> <i>Lombardy Rd. &amp; Ct. (+2)</i> <i>Lorain Ave. (+1)</i>
<b>5 Households:</b> Edgewood Ave. Lombardy Rd. & Ct. Lorain Ave.	<b>5 Households:</b> <i>Cavalier Dr. &amp; Ct. (+1)</i> Edgewood Ave. Lombardy Rd. & Ct. <i>Mt. Quail Rd. (+2)</i> <i>Sutherland Ave. (+1)</i>
<b>3-4 Households:</b> Cavalier Dr. & Ct. Dennis Ave. Kinsman View Circle Lockridge Dr. Margate Rd. Marvin Rd. Mountain Quail Rd. Pinewood Ave. Sutherland Rd. Woodridge Ave.	<b>3-4 Households:</b> Dennis Ave. Kinsman View Circle Lockridge Dr. Margate Rd. Marvin Rd. Pinewood Ave. <i>University Blvd. (+3)</i> Woodridge Ave.
<b>2 Households:</b> Royalton Rd. & Ter. Timberwood Ave.	<b>2 Households:</b> <i>Belton Rd. (+1)</i> Royalton Rd. & Ter. <i>Snowy Owl Dr. (+1)</i> Timberwood Ave.
<b>1 or No Households:</b> Belton Rd. Colesville Rd. Eastwood Ave. Eisner St. Glenwild Rd. & Ct. Kerwin Rd. & Ct. Ladson Rd. Northwood Ave. Ordway Rd. Snowy Owl Dr. Southwood Ave. Thistle Dr. & Ct.	<b>1 or No Households:</b> Colesville Rd. Eastwood Ave. Eisner St. Glenwild Rd. & Ct. Kerwin Rd. & Ct. Ladson Rd. Northwood Ave. <i>Ordway Rd. (+1)</i> Southwood Ave. Thistle Dr. & Ct.

Skylights  
 Custom Painting  
     Interior/Exterior  
 Siding  
     Aluminum  
     Vinyl  
     Shutters/Soffit/Trim  
 Concrete  
 Asphalt  
 Brickwork  
 Driveways  
 Patios  
 Pads  
 Sidewalks  
 Kitchens & Baths  
     New  
     Modernized  
 Remodel Basements  
     Interior Structures  
     Rooms  
 Additions  
 Extensions  
 Dormers  
 Roofing  
 Gutters  
     Replace  
     Clean  
 Thermal Windows & Doors  
     Replacement or Storm  
 Custom Sundecks  
 Custom Verandas  
 Custom Porches  
     Glass or Screen  
 Heating  
 Air Conditioning  
 Locksmith  
     New or Old Work  
 Repairs  
     Plumbing  
     Carpentry  
     Electrical



## Maryland Home Improvement Company (Roofing Experts)

*Northwood News Special Offer*  
 House Painting – \$150 Off  
 Roofing Special – \$200 Off  
 Vinyl Siding – \$250 Off  
 Vinyl Windows – \$300 Off

### Read This Please

I live in this neighborhood at 10909 Lombardy Road and I specialize in new roofs, roof repairs and additions, painting and interior renovations.

I take pride in my work and would gladly give you a free, no-obligation estimate on roof repair or replacement. Please call me at 301-681-6802 and leave a message if I am out working in the neighborhood.

I am a carpenter-roofer with more than 30 years experience and have completed over 150 new roofs in the Northwood, Pinecrest, 4-Corners, Kemp Mill, and Arcola Avenue neighborhoods within the last 4 years, with *no leaks*.

References aplenty upon request. **MHIC #71419**

Winter did a great deal of damage to roofs, gutters, downspouts, and other exterior parts of your home. With 30 years experience, I'll beat any estimate you may get. I use the best shingles money can buy — 30 year warranty certainteed. Ask your neighbors about my work. It is *Top Notch!*

**Call Jim & Noe**  
**(Home Care by the House Doctor)**  
**301-681-6802**  
 Please leave message & phone number;  
 I will respond ASAP.

## Northwood Real Estate Market Report



### **BARBARA CIMENT** ASSOCIATE BROKER

*\$150 Million in Career Sales*

*Top 1% Nationwide*

*Long & Foster's*

*#1 Producer in Silver Spring*

**Tel: 301-622-7002**

**Email: [barbara@ciment.com](mailto:barbara@ciment.com)**

**Web: <http://www.ciment.com>**



### Specialist in Northwood Market

Given my position in your neighborhood, sellers, buyers, and appraisers constantly call me for advice. In turn, they provide me with very wide intelligence and insight into the real estate market on a street-by-street basis. You should not make a move without first asking for my Free Market Analysis.

### Let Me Help You Relocate

I can offer you **FULL** service with respect to any move in the U.S. by identifying a Realtor from our network. For local moves, I will list your home for sale and help you locate a new home.

### Mention this Ad for Free Home Warranty

If you list your Northwood home with me before June 30, 2003, and mention this **Northwood Ad**, I will pay for a home warranty.

### My Reputation for Service and Integrity

Hear what buyers and sellers have to say about their experience of working with me. Check out my web site: [www.ciment.com](http://www.ciment.com).

### Recent Northwood Settled Properties

03/10/03-05/14/03

Address	Sold Price	Style	BR	BA	DOM
1006 PLAYFORD LN	\$330,000	Split Level	4	2/1	16
1128 LOXFORD TER	\$312,000	Split Level	6	3	98
826 LOXFORD TER	\$306,300	Bilevel	4	2/1	12
1112 CHISWELL LN	\$306,000	Split Level	4	2/1	9
517 DENNIS AVE	\$290,000	Rambler	4	3	11
915 LOXFORD TER	\$285,000	Split Foyer	4	2/1	10
104 BELTON RD	\$275,000	Bilevel	3	2	22
517 UNIV BLVD W	\$271,000	Cape Cod	6	3	121
303 LADSON RD	\$260,000	Rambler	3	2	6
9 KINSMAN VIEW CIR	\$232,000	Townhome	3	2/2	3
201 HANNES ST	\$185,000	Rambler	4	2	0

### Silver Spring Subdivision Sales

(March 1, 2003 - April 30, 2003)

(DOM - Days on Market from List Date to Contract Date)

SUBDIVISION	# Units Settled	Avg. Sale Price	Avg. DOM
BALLANTRAE	2	\$293,000	4
BURNT MILLS	4	\$312,082	42
CONN AVE ESTATES	14	\$199,286	41
CONN AVE PARK	5	\$253,300	25
DUMONT OAKS	5	\$290,540	23
FOREST ESTATES	4	\$271,250	63
<b>FOREST KNOLLS</b>	<b>4</b>	<b>\$308,325</b>	<b>34</b>
GLENMONT	7	\$240,500	61
HIGHLAND VIEW	7	\$323,750	52
INDIAN SPRING	5	\$341,415	24
KEMP MILL	7	\$347,857	52
LONGMEAD	7	\$152,914	33
MIDDLEBRIDGE	2	\$300,512	45
NORTH WOODSIDE	3	\$313,167	8
<b>NORTHWOOD</b>	<b>7</b>	<b>\$267,071</b>	<b>54</b>
PARKWAY	2	\$295,000	28
ROSEWOOD	1	\$236,000	11
ROSSMOOR LEISURE	39	\$190,613	32
SLIGO PARK	3	\$370,000	16
TAKOMA PARK	3	\$286,500	24
TIVOLI	3	\$349,333	7
UNIVERSITY TOWERS	6	\$109,458	27
VEIRS MILL	12	\$228,583	24
WESTCHESTER	2	\$390,000	47
WHEATON HILLS	9	\$256,667	6
WOODMOOR	4	\$324,225	26
WOODSIDE	17	\$446,200	26
WOODSIDE FOREST	2	\$420,000	68
WOODSIDE PARK	2	\$472,000	41

# Homes Sweet Homes Revisited

(continued from page 6)  
of 44 families.... Finally their friends (lawyers whose clients included the National Housing Authority, forerunner of the Department of Housing and Urban Development) went to Congress and got a special amendment to the federal housing law to include cooperatives in the national mortgage program. The cooperative got mortgage money, and it was full steam ahead on building.... The average price for the homes was about \$18,000....

“As building was about to get underway, the association’s board of directors were working feverishly, nights and weekends, non-stop. Some of the leaders

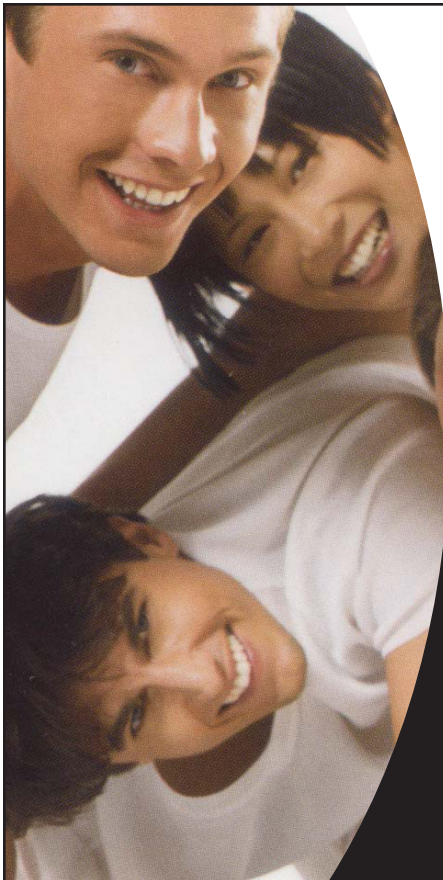
were working as many hours on the project as they were on their jobs.... ‘We wrote the (building) specifications,’ says Herbert Lahne. ‘We typed them out on stencils, one finger at a time. And it was 27 pages, single-spaced, of specifications.’ ...What they didn’t know, they looked up in books.

“Perhaps the biggest shock to the builder, Elias Nadelman, was the fact that he had, in effect, 44 building supervisors.... An example of the personal supervision given the project was seen the day the bulldozers came to grade the land. ‘The women (says Lahne) ... came out with their own set of blueprints and knew

the swale of how that land should go. They were out there ... telling the poor bulldozer guy, ‘You’re going too high,’ or, ‘You’re going too low.’”

The families finally moved into their new homes four years after the project began, in the spring of 1955. Thirty years later, when the original mortgages were paid off, 22 of the families remained. Demma ended her 1985 article with this remark from Leo Gershenson: “The reward has been, quite simply, the neighborhood.”

Early plans are afoot for a community celebration of the Northwood Park project. Please call Robin Loube (301.681.4987) or Liz Sequiera (301.681.9447) if you’d like to help. ■



## Andrea S. Flamer, D.D.S.

Four Corners Medical Center  
344 University Blvd. West, Suite 327  
Silver Spring, Maryland 20901

**(301) 593-4800**



Crowns/Veneers  
Root Canal Therapy  
Partials/Dentures  
White Fillings  
Extractions  
Snore Appliances

## Whiter teeth faster than ever before with the radically new Zoom! Whitening Systems.

Did you know most celebrities whiten their teeth? They do it to feel good, look great, and make a great first impression. Their success depends upon it. You can do it, too, in about an hour with the Zoom! Whitening System. Call us to set up a FREE smile evaluation and find out more about the radically new Zoom! Whitening System.

“Offering Today’s Concepts in Dental Care”  
Emergencies Welcome

# **Northwest Branch Swim Club**

**10850 Lockwood Drive**

**Silver Spring, Maryland**



**Three Age-Appropriate Pools**

**Spacious, Wooded Grounds**

**Volleyball and Basketball Courts, Playground**

**Snack Bar and Social Events  
For the Whole Family**

**Home of the Dolphins,  
An MCSL-Registered Swim Team**

**For membership information call  
301-593-9462**